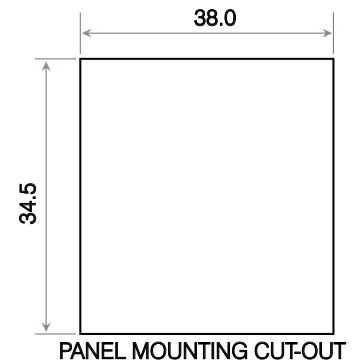
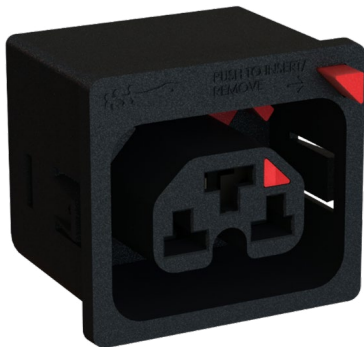




Technical Datasheet

Product Code: PACX5015BKR

Description: CX IEC Locking Appliance Outlet - Black



General Information

Rating	10A/16A Max 250V~
Materials	Face & Back Cover: Polyamide 66 (PA66) - To RAL Colour 9004 (Signal Black) Gloss Finish Contacts: Phosphor Bronze C5191 Push Button: Polycarbonate - To RAL Colour 3020 (Traffic Red) Spring: Carbon Steel (Zinc Plated) Locking Tab: Manganese Steel 65Mn (Zinc Plated to EN 1706) 5 Microns
Panel Thickness	1.5mm
Aperture Cutout	(38.0mm) x (34.5mm)
Receptacle Size	6.3mm x 0.8mm
Insulation Resistance	100MΩ (500V DC, 1 Min)
Dielectric Strength	2KV (50Hz 1Min) to accessible surfaces
Temperature Rating	-20°C To + 70°C
Lock Retention	> 100N
Features	Fits any standard C14, C16, C20 or C22 connectors Anti-Vibrate Integral plug retention feature Easy push button to release

Standards IEC /BS EN 60320-1:2015